



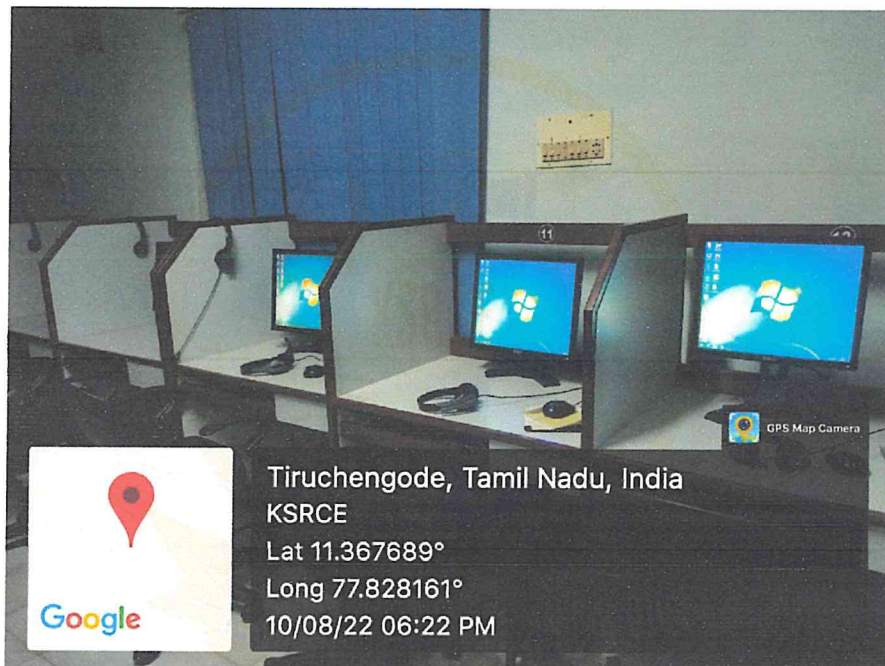
# K.S.R. COLLEGE OF ENGINEERING

(An Autonomous Institution)

Tiruchengode, Tamil Nadu - 637 215.

## 7.1.7. Details of software procured for providing the Assistance

K.S.R. College of Engineering utilizes assistive technology which enables the students with disabilities to complete their task with confidence without compromising on time or any other impairment. All the computers in the library are equipped with free and open source software. The computers in the communication lab are equipped with audio visual systems. All Operating Systems (OS) such as Windows and Linux are purchased with built-in screen reader and text magnifier software.



**1. Vision tools:** The following tools are implemented for students with visual disabilities.

(i) **High Contrast tool:** While implementing this option, clear vision is obtained without much strain while working for long duration in front of a screen, new dark themes and contrast themes can be used to reduce screen brightness and increase contrast without reducing the aesthetic effect.



PRINCIPAL  
K.S.R. COLLEGE OF ENGINEERING  
K.S.R. KALVI NAGAR,  
TIRUCHENGODE-637 215

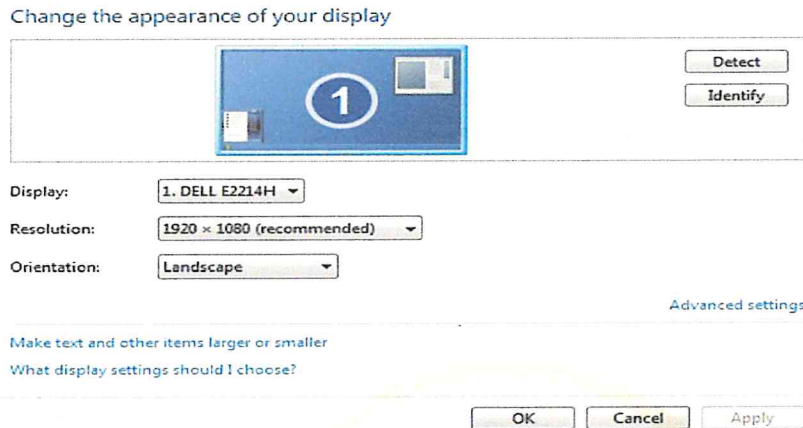


# K.S.R. COLLEGE OF ENGINEERING

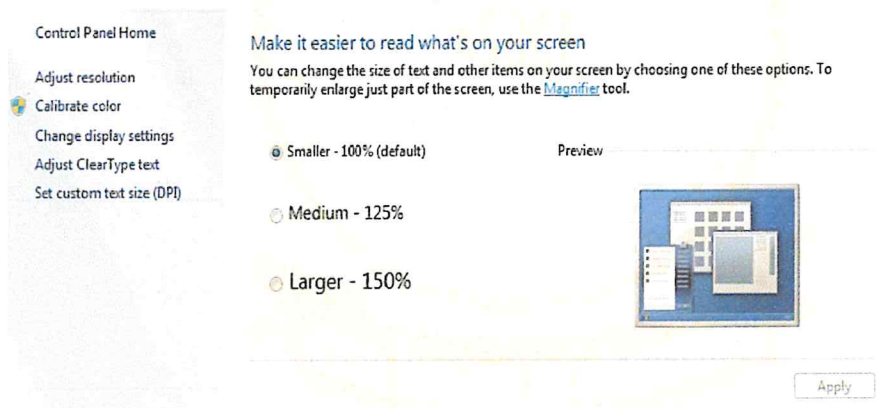
(An Autonomous Institution)

Tiruchengode, Tamil Nadu - 637 215.

- (ii) **Display tool:** This option helps to adjust text size, customize the color and the size of the mouse cursor



- (iii) **Magnifier tool:** Similar to a digital magnifying glass, a magnifier can be used to enlarge words and images on part of the screen or full screen.



2. **Hearing tool:** This tool is implemented for students with hearing disabilities. From capturing to audio options, to overcome difficulty in hearing, Windows has settings and features that can help. While having difficulty in hearing or learning a new language, watching a video in a noisy environment, captions can be used to read the spoken words in the videos one watches. And the redesigned caption themes in Windows make it easier to customize the experience, including text size, font, color, and background.



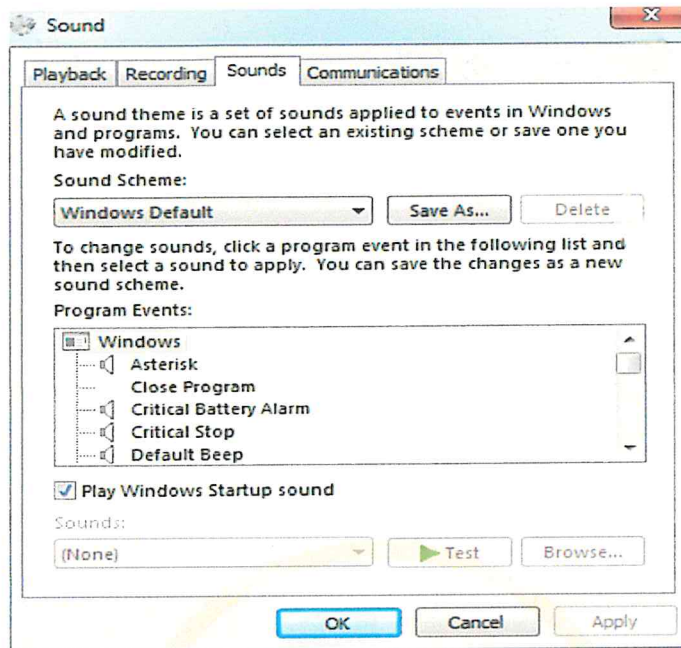
PRINCIPAL  
K.S.R. COLLEGE OF ENGINEERING  
K.S.R. KALVI NAGAR,  
TIRUCHENGODE-637 215



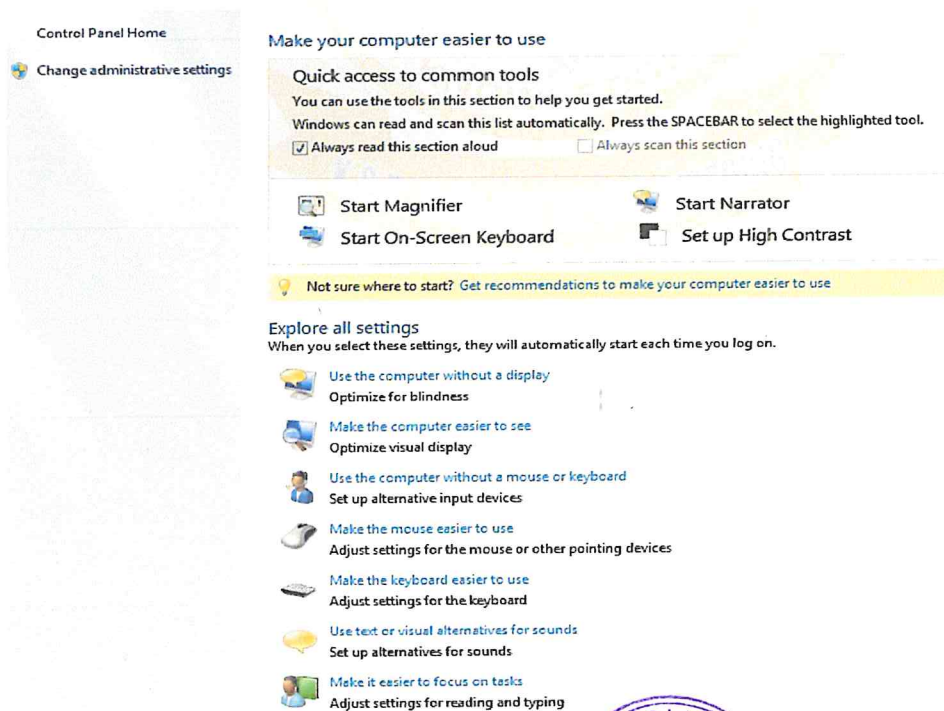
# K.S.R. COLLEGE OF ENGINEERING

(An Autonomous Institution)

Tiruchengode, Tamil Nadu - 637 215.



- 3. Narrator tool:** This tool is implemented for students with visual disabilities. This option Narrator provides simplified navigation and audio descriptions so that the visually impaired can easily interact with everything on the screen using the keyboard or preferred Braille device.



  
PRINCIPAL  
K.S.R. COLLEGE OF ENGINEERING  
K.S.R. KALVI NAGAR,  
TIRUCHENGODE-637 215

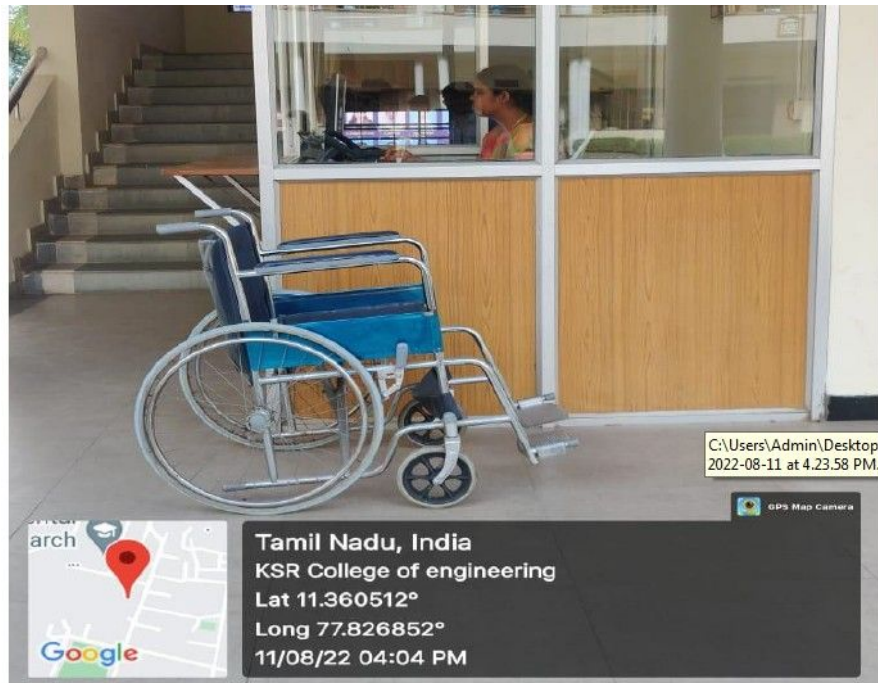


# K.S.R. COLLEGE OF ENGINEERING

(An Autonomous Institution)


Tiruchengode, Tamil Nadu - 637 215.

## Wheelchair Accessibility



Students with disability can access wheelchair in the main entrance of the College.



  
PRINCIPAL,  
K.S.R. COLLEGE OF ENGINEERING  
K.S.R. KALVI NAGAR,  
TIRUCHENGODE-637 215